

OneGloss M

MOUNTED

One-step finisher and polisher
for composite and enamel



Finishing and polishing with

One-step OneGloss M silicone polishers contain aluminium oxide and provide the ideal finish for all types of composite restorations simply by altering the contact pressure, as you go from finishing to polishing.

- OneGloss M polishers are mounted on stainless steel CA mandrels and are sterilisable
- Finishing is done with heavy contact pressure (approx. 1.0 N)
- Polishing is done with feather light contact pressure (approx. 0.3 N)
- Removal of excess composite or cement and polishing of enamel with moderate to feather light contact pressure
- Polishing of enamel after orthodontic debonding, after scaling or for the removal of tooth discolouration with feather light contact pressure
- Recommended speed range 3,000 min⁻¹ - 10,000 min⁻¹ with intermittent water spray; maximum permissible speed of 15,000 min⁻¹ must not be exceeded



one instrument

Shape selection

The product line includes four shapes which are optimally matched to the surfaces to be treated.

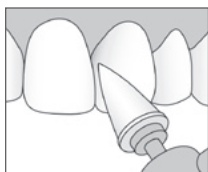
Cup

for cusp, incisal and occlusal



Midpoint

for labial, lingual, buccal, occlusal



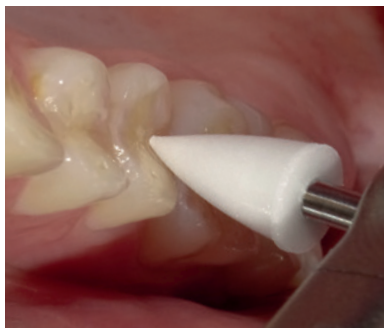
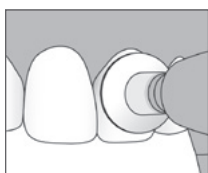
Minipoint

for fissures, cervical



IC

for labial, lingual, buccal, interproximal



Order information

OneGloss M

with CA mandrel, 12 pcs. per box



Shape: Minipoint

PN 0186



Shape: Cup

PN 0187



Shape: Midipoint

PN 0188



Shape: IC

PN 0189



Manufacturer
SHOFU INC.

11 Kamitakamatsu-cho,
Fukuine, Higashiyama-ku,
Kyoto 605-0983, Japan

[EC] [REP] SHOFU DENTAL GmbH

An der Pönt 70, 40885 Ratingen, Germany

www.shofu.de